



Point of Care Solutions

Workstations on Wheels
Wall Mounts
Medication Delivery Carts



At TouchPoint Medical, we are committed to developing customer-driven solutions that advance healthcare professionals' delivery of care.

We are a global provider of innovative and intelligent Point of Care and Medication Management Solutions to thousands of hospitals and health care facilities around the world.

Our Point of Care portfolio continues to expand and evolve to meet healthcare professionals' clinical and IT needs. From wall mounted solutions to our mobile medication delivery carts, we are committed to delivering solutions that advance the delivery of care by providing reliable products and dependable customer support throughout your partnership with TouchPoint Medical.

BRINGING CARE FORWARD.™



AccessPoint™



workFLO®



AccessRx MD™



AccessRx Secure™



AccessPoint™



AccessMonitor™

Mobile Point of Care Solutions

Workstations on Wheels	6
AccessPoint™	6
workFLO®	17
Medication Delivery Carts	24
AccessRx MD™	25
AccessRx Secure™	27
Equipment Carts	28
AccessPoint™	28

Stationary Point of Care Solutions

Mounting Solutions	32
AccessMount™	32



AccessPoint™

The Ultimate in Ergonomics,
Flexibility and Long-term value.

AccessPoint™ workstations on wheels provide an ergonomic solution for caregivers, a flexible technology platform for IT and a reliable long-term equipment investment for healthcare facilities.



AccessPoint™

The AccessPoint™ Series Specifications

Work Surface Height Adjustment Range

914mm - 1219mm (36in - 48in)

Work Surface Area

1723cm² (267in²)

Workstation Footprint

425mm x 445mm (16.75in x 17.5in)

Construction

- Powder-coated, cast aluminum with MICROBAN® infused antimicrobial protection.
- Anodized extruded aluminum column.
- Polymer work surface and touch points with MICROBAN® infused antimicrobial protection.



Casters

Four, single wheel 5" casters: 3 braking, 1 directional/tracking

Power Options AC Powered / DC Powered

- LiFe (Lithium-Iron Phosphate) or Li-Nano (Lithium-Iron Nanophosphate) battery options
- Can be configured to be powered by direct current (DC), alternating current (AC), or a combination of the two.
- Our DC optimized power with selectable voltage delivers 20% greater efficiency than other AC options on the market
- Also available as a non-powered cart

KEY BENEFITS



Advanced Li-Nano Technology with 5 Year Warranty



Ergonomic Design Elements



Fan/Fanless Charging Options



Universal & Expandable Tech Tray



Field Upgradeable



Corrosion Resistant Finishes

Maximize your workflow & your investment.

AccessPoint™ workstations stand the test of time with easily configurable options to adjust to your changing clinical and IT requirements.



**Single Monitor
Workstation**



**Laptop
Workstation**



**Dual Monitor
Workstation**



**Telehealth
Workstation**

Maximum Flexibility

- Reduce downtime and tailor to your changing needs with our field-upgradeable design
- Field-upgradeable options include: BCMA, telehealth, dual monitors, medication management storage

Cleaner by Design

- Our exclusive MICROBAN™ antimicrobial protection is infused into each workstation rather than topically applied, to ensure long-term protection
- Fanless charging mode reduces circulation of dust, debris and other harmful contaminants while creating a quieter environment for your patients
- Advanced polymer construction and proprietary finishes provide corrosion resistance

Designed with the Future in Mind

- Support many technology form factors with our universal tech tray and expandable side bay
- Easily configured technology integration for AC, DC, or both
- Extend the life of your workstations with our battery-only replacement option. Choose a battery chemistry that fits your workflow and budgetary needs, with the ability to upgrade later to a more advanced chemistry

Simplicity for the Long Haul

- A high level of commonality across AccessPoint™ replacement parts and components help simplify the service and maintenance of your entire fleet

Monitor and Manage your investment.

With AccessMonitor™ performance monitoring software, a field upgradeable design and battery only replacement options, you can monitor and manage the performance of your fleet of workstations.



AccessMonitor™

AccessMonitor™ web-based dashboard system delivers access to workstation performance data to streamline fleet management and increase workstation uptime.

- Scalable system design to support anywhere from 1 to over 1,000 workstations with easy-to-use group controls
- Automatic workstation visibility and set-up
- Reporting features include: power usage rates, real-time updates on user & alert management

Expand your delivery of care and evolve your capabilities.

AccessPoint™ workstations can help you achieve your interoperability and telehealth adoption goals with our flexible technology integration and reliable design.



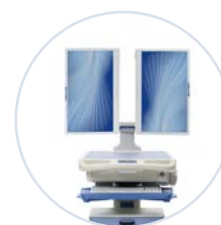
AccessPoint™ Telehealth Workstation on Wheels

- Supports larger monitor formats with dual monitor options available
- One-way and two-way video conferencing technology
- High resolution cameras to review patient condition
- Wireless LAN bridge to enable wireless connectivity



AccessPoint™ Dual Monitor Workstation on Wheels

- Enables remote delivery of specialized care and timely diagnostics
- Monitor arms simultaneously fold inward with one hand to easily fit through doors or tight spaces
- Monitor configuration provides separate viewing access for caregiver and patient
- Mount a video or web camera above the monitor, facing forward; camera travels with the monitor through its entire range of motion
- Front storage options are perfect for critical diagnostic equipment



Ergonomics & Safety go hand-in-hand.

Our workstations are designed to adjust for the caregiver, giving them the ultimate in user comfort, convenience and flexibility.



Ergonomic Design Features

Meets the Cornell University Healthcare Cart Ergonomic Standards 35-point checklist measuring ease of use, safety and effectiveness of the cart.



Fully-Adjustable Display Mount

Raise, lower, tilt, swivel or rotate the monitor to find the ideal viewing angle, including a bifocal friendly angle if needed. Monitor can also be lowered to provide enhanced visibility while traveling room to room.



Antimicrobial Work Surface

Large, adjustable work surface with TouchPoint Medical-exclusive infused MICROBAN® antimicrobial protection.



Capacitive Touch Keypad

Easily manage task lighting, battery level, e-lift control and computer power, even while wearing several pairs of gloves.



Integrated Footrest

Designed for maximum comfort and durability, the integrated footrest helps reduce fatigue and allows nurses to relax in a more ergonomic position throughout the day.



Fully-Adjustable Keyboard Tray

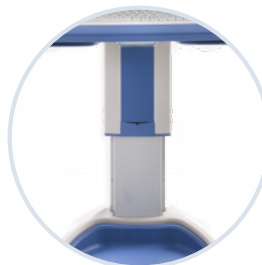
Provides the widest range of ergonomic adjustment:

- 10° of positive tilt
- 20° of negative tilt
- 180° of rotation
- 177mm (7in) of independent height adjustment



Fanless Charging

The quiet fanless charging mode reduces the circulation of dust, debris and other harmful contaminants while quietly recharging your system in 3 hours.



Stability & Flexibility

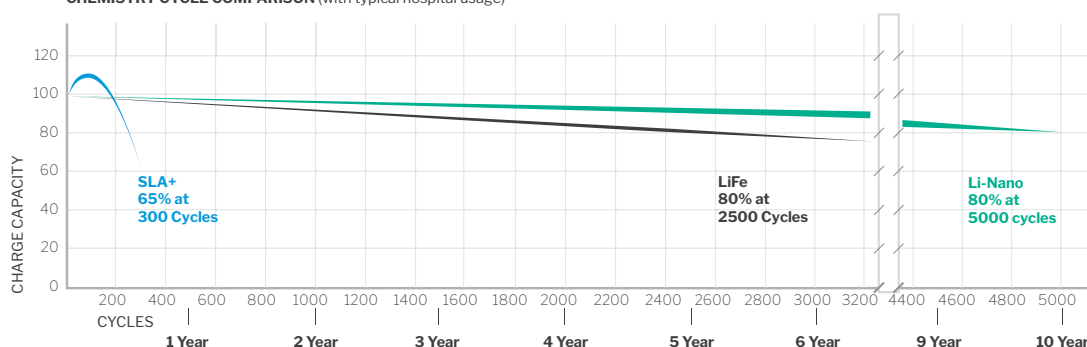
The robust column and cart design provides a stable workstation to accommodate a variety of display, storage and accessory options.

Ensuring Uptime for Caregivers, shift after shift.

Engineered to deliver elite performance & long-term value.
Our power system is designed and manufactured to withstand the day-to-day rigors of today's healthcare environment.

Our advanced Li-Nano batteries deliver **2X the life** of typical LiFe batteries so you can focus on delivering care, not on managing your equipment. Plus, its long life and ease of being recycled make it a greener battery choice for healthcare facilities.

CHEMISTRY CYCLE COMPARISON (with typical hospital usage)



- **SLA+** systems degrade almost immediately after initial use.
- **LiFe** provides consistent performance for 2500 cycles.
- **Li-Nano** provides maximum performance for more than 5,000 cycles.

	LiFe Lithium-Ion Phosphate (LiFePO ₄)	Li-Nano Lithium-Ion Nanophosphate
Battery Life	2,500+ Cycles	5,000+ Cycles
Battery Runtime (@35watts)	13 Hours*	13 Hours*
Charging Status Indications	Continuous readout on LEDs; BatteryPro software	Continuous readout on LEDs; BatteryPro software
Recharge Time Fast Charge (Fan) Silent Charge (Fanless)	2 Hours 3 Hours	2 Hours 3 Hours
5 Year Replacement	1	0
Battery Capacity	512Wh	512Wh
Input Voltage	100-240 VDC @ 4.5 amps, max	100 - 240 VDC @ 4.5 amps, max
Output Voltage DC Optional AC	10.5-16V unregulated 12-12V selectable 5-10V selectable 120V, 60Hz, 150W	10.5-16V unregulated 12-12V selectable 5-10V selectable 120V, 60Hz, 150W
Power	150W; 200W peak	150W; 200W peak
Battery Warranty	3 Years	5 Years

*Actual runtime may vary depending on several factors such as technology configuration, battery age, usage pattern and power supply model/battery option. Runtime is based on continuous use using 35 watts.

Everything you need - Accessible and Available.

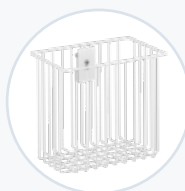
Our accessories help improve your workflow with effective ways to store, hold, and secure the items you rely on everyday.

Supply Storage & Organization

Effectively manage your supplies with a variety of bins, baskets and drawer options we offer.



**Storage Drawers
with Lock**
AP-AFSUDDCABINET



**Storage Basket
254mm (10in)**
AP-AL10STORBASKET

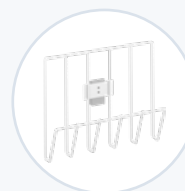


Chart Holder
AP-ALSCHARTH

Peripheral Equipment

Configure your workstations with the necessary equipment for your specific applications.



Signature Pad
AP-SIGNPAD



Barcode Scanners
AP-ASWHHP1902HD



Keyboard, iRocks Backlit
AP-AKBACKLIT

Medication Management

Increase security and accountability of medications all the way to the patients' bedside.



**Locking Exchangeable
Medication Cassettes**



**Individual, Patient
Specific Locking
Medication Storage**



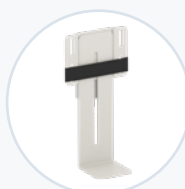
**Standard Sharps
Container Holder**
AP-ALSSHARPSH

VESA & Accessory Rail Mounted Solutions

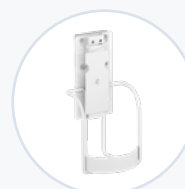
Securely mount your peripherals and supplies with an array of mounting solutions.



VESA Camera Mount
AP-ACAM-VESA



Sharps Container Holder
AP-ALSSHARPH-02



Wipe Holder Kit, Small
AP-AWIPEHOLDER-SM

Ask your TouchPoint Medical Representative about additional accessories to meet your workflow and storage requirements.

Fully Integrated. Fully Confident.

Allow our experts to seamlessly integrate and deploy your new workstations with our UL certified hardware integration solution.



We take equipment from this...



...To this

KEY BENEFITS



Ready to deploy
to your team upon
arrival



Hardware is ETL
Listed and Conforms
to UL 60601-1*



2 Year Standard
Warranty**



Installation of
BatteryPro
Monitoring Software



Multi-Vendor
Support - One Point
of Contact



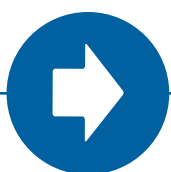
Provide Your Own
Equipment or
Purchase Through us

**Our hardware is ETL Listed. Conforms to UL 60601-1. CAN/CSA C22.2 n0.601.1 and IEC/EN 60601-1-1 medical safety standards*

***2 Year Standard Warranty on ALL TouchPoint Medical furnished equipment (including computers and peripherals)*

Protect Your Investment with our Enhanced Service Program.

Allow our experts to seamlessly integrate and deploy your new workstations with our UL certified hardware integration solution. Choose the plan that is right for you, whether it's focused on minimizing downtime, reducing unplanned maintenance costs or freeing up valuable support personnel.



ADVANCE

Deployment Services

- On-site installation
 - Unpack and integrate and attach accessories
 - Set up wake-on power
 - Install software
 - Perform quality inspection and functionality audit
 - Staging of rollout
- On-site Training
- Per cart pricing, 10 cart minimum



MAINTAIN

Preventative Maintenance

- You choose the number of Preventative Maintenance visits per year.
- Our trained technicians will arrive on site and conduct a comprehensive multi-point inspection which covers the cart, power supply and battery (if applicable)
- After the PM is performed the technician will fill out a form (by serial number) listing which carts passed or failed and what needs to be repaired



ASSURANCE

Extended Warranties

- Choose from:
 - Parts Only coverage
 - On-Site Service (Parts & Labor)
- Available in 3 and 5 year terms
- New or existing carts (up to one year from the date of purchase)
- Additional discount available if purchased at the same time of the cart purchase



Contact your TouchPoint Medical representative to learn more and discuss these service program options. Visit touchpointmed.com/contact to get in touch with your local representative.



workFLO®

Maneuvering through
your workflow with ease.

The workFLO® product solutions deliver elegant simplicity
for today's fast-paced healthcare environment.



workFLO®

	Single Monitor/ All-in-One Workstation	Laptop Workstation	Documentation Workstation Adjustable Height	Documentation Workstation Fixed Height	Device Mount Roll Stand
Height Adjustable	✓	✓	✓		
Antimicrobial Surfaces	✓	✓	✓	✓	✓
Additional Accessories	✓	✓	✓	✓	✓
Tracking Caster for Easy Mobility	✓	✓			

With a lightweight and streamlined design, the workFLO® series supports and enhances delivery of care.

KEY BENEFITS



Computer Security
Options



Antimicrobial
Surfaces



Lightweight
Design



Accessory
Portfolio



Easy Height
Adjustment



Stable
Maneuverability

From single monitor workstations to device stands, workFLO® helps deliver better patient experiences through its streamlined and easy-to-manuever design.



SINGLE MONITOR / ALL-IN-ONE WORKSTATION WF-CSX-AH

Height Adjustment Range: 898-1198mm (35-47in)
Weight Capacity: 10kgs (22lbs)
Lift Mechanism: Gas spring push button actuation
Work Surface: Antimicrobial work surface on all composite and powder coated materials
Tech Bay: Key lock computer security with universal key. Optional key codes available
Casters: 127mm (5in) – 3 locking, 1 directional/ tracking caster for ease of mobility
Mounting Options: Single Monitor, Secure (no drift) positioning with Tilt/Swivel VESA 75/100 mount, or Tablet mount
Main Material: Aluminum alloy/Stainless steel/ ABS(VO)
Cart Weight: 29.9kgs (66lbs)
Cart Footprint: 538mm x 574mm (21.19in x 22.58in)



LAPTOP WORKSTATION WF-CLX-AH

Height Adjustment Range: 898-1198mm (35-47in)
Weight Capacity: 10kgs (22lbs)
Lift Mechanism: Gas spring push button actuation
Work Surface: Antimicrobial work surface on all composite and powder coated materials
Tech Bay: Key lock computer security with universal key. Optional key codes available
Casters: 127mm (5in) – 3 locking, 1 directional/ tracking caster for ease of mobility
Mounting Options: Laptop with optional security bracket
Main Material: Aluminum alloy/Stainless steel/ ABS(VO)
Cart Weight: 27.7kgs (61lbs)
Cart Footprint: 538mm x 574mm (21.19in x 22.58in)



DOCUMENTATION WORKSTATION ADJUSTABLE HEIGHT WF-RLX-AH

Height Adjustment Range: 800-1050mm (31.5-41.5in)
Weight Capacity: 8kgs (17.6lbs)
Lift Mechanism: Gas spring push button actuation
Work Surface: Antimicrobial work surface on all composite and powder coated materials
Casters: 62.5mm (2.5in) – 5 locking
Mounting Options: Laptop with power adapter containment basket, standard; optional laptop security bracket and tablet mount
Main Material: Aluminum alloy/Stainless steel/ ABS(VO)
Cart Weight: 12.7kgs (28lbs)
Cart Footprint: Ø604.5mm (Ø23.8in) maximum



DOCUMENTATION WORKSTATION FIXED HEIGHT WF-RLX-FH

Height Adjustment Range: 1000mm (39.5in)
Weight Capacity: 10kgs (22lbs)
Work Surface: Antimicrobial work surface on all composite and powder coated materials
Casters: 62.5mm (2.5in) – 5 locking
Mounting Options: Laptop with power adapter containment basket, standard; optional laptop security bracket and tablet mount
Main Material: Aluminum alloy/Stainless steel/ ABS(VO)
Cart Weight: 9.1kgs (20lbs)
Cart Footprint: Ø 604.5mm (Ø23.8in) maximum



DEVICE MOUNT ROLL STAND WF-RDM-FH

Height Adjustment Range: 1065mm (42in) with rear handle
Weight Capacity: 15kgs (33lbs)
Casters: 62.5mm (2.5in) – 5 locking
Mounting Options: Slide Plate
Main Material: Aluminum alloy/Stainless steel
Cart Weight: 5.4kgs (12lbs)
Cart Footprint: Ø 604.5mm (Ø23.8in) maximum

Hygienic Roll Stand - Management of Hygiene and Safety Solutions.

Interchangeable dispensing solution for masks, gloves and sanitizer provides mobile access at various entry points throughout your facility.





HYGIENIC ROLL STAND

Height Adjustment Range: 1065mm (42in) with rear handle

Weight Capacity: 15kgs (33lbs)

Casters: 62.5mm (2.5in) – 5 locking

Mounting Options: Slide Plate

Main Material: Aluminum alloy/Stainless steel

Cart Weight: 5.4kgs (12lbs)

Cart Footprint: Ø 604.5mm (Ø23.8in) maximum



Main Back Board 119-002210-00

- Back board fastens to mounting plate of the workFLO® device mount roll stand.
- Holds up to 3 modules. Tabs on modules slide easily into slots on back board.
- Locking plate on rear of the back board keeps module secure while allowing for easy exchange of modules.
- Easily modify messaging as needed using the 9" x 12" clear magnetic document holder.



Hand Sanitizer Cover 119-002216-00

- "One size fits most" hand sanitizer bottles up to 32 fl oz.
- Fits cylindrical bottles up to 4" diameter.
- Will not work with gallon jug style dispensers.
- Locks into back board in any position (3 per back board max).



Mask Cassette 119-002219-00

- Holds masks that are bulk packaged (not tissue box style).
- Dispense by grabbing the top most mask in the cassette and pull through window.
- Holds individual masks up to 7.5"L x 4"W.
- Locks into back board, only in the middle position (1 per back board max).



Mask Box Cover 119-002218-00

- One size fits most" tissue box style mask boxes.
- Fits mask boxes up to 8"L X 4.5"W X 3.5"D.
- Locks into back board in ANY position (3 per back board max).



Glove Box Cover 119-002217-00

- "One size fits most" qty 100 and qty 200 glove boxes.
- Fits glove boxes up to 9.5"L X 5.5"W X 4"D.
- Locks into back board in ANY position (3 per back board max).

Equipment changes over time and our line of accessories can be added or removed to fit your application needs.



Side Supply Bin Kit
WF-SSUPBIN



Rear Supply Bins Kit
WF-RSUPBINS



Rear Supply Basket, Polymer
WF-RSUPBASK-P



Extended Rear Handle, Steel
WF-EXRHAND



Front Supply Basket, Wire
WF-FSUPBASK-W



Tablet, Surface Mount
AM-TABMNT-S



VESA Mount, Tilt/Swivel
WF-VESA-MNT



VESA Mount, Light Duty
WF-VESA-MNT-LT



Tablet Mount, Tilt/Swivel
WF-TAB-MNT



Drawer, Single, Locking
WF-DRWR-SL



Bracket, Scanner Cradle, Code 2600
WF-SCNBRKT-CD2600



Bracket, Printer, Zebra QLN220
WF-PBRKT-ZQLN2



Contact your TouchPoint Medical representative to learn more and discuss additional accessories specific to your point-of-care application. Visit touchpointmed.com/contact to get in touch with your local representative.



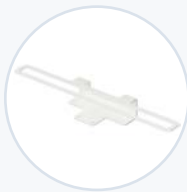
**e-Signature Pad,
VESA Mount**
WF-SIGNPAD-VESA



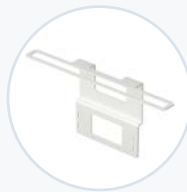
**Bracket, Scanner,
VESA Mount**
WF-SBRKT-VESA



**Cup Holder,
VESA Mount**
WF-MEDCUP-VESA



**Roll Stand Laptop
Security Bracket**
WF-RLT-SECBRKT



**Laptop Security
Bracket**
WF-CLT-SECBRKT



AccessRx MD™





AccessRx Secure™

Helping to Close the Loop on Medication Administration.

The AccessRx Series of medication delivery carts provides solutions to more securely and efficiently transport and administer medications at the patients' bedside.



	AccessRx MD™	AccessRx Secure™
Maximum Number of Bins	12	12
Configurable Drawer Options	✓	✓
Exchangeable Medication Cassettes		
Individual Locking Patient Drawers	✓	✓
Software links to the HIS	✓	
Controlled Substance Drawer Option	✓	✓
Patient Bin Assignment	Automatic	Manual
Antimicrobial Infused Cart Material	✓ 	✓ 

KEY BENEFITS



Individual Locking
Bins & Drawers



Supports real-time
BCMA



Supports Centralized
or Decentralized Medication
Fill Workflow



Exchangeable
Medication
Cassettes



Secure & Track
Patient Medication



Advanced Li-Nano Technology
w/ 5 Year Warranty

Closing the loop of medication delivery between pharmacy and the patient bedside.

AccessRx MD™

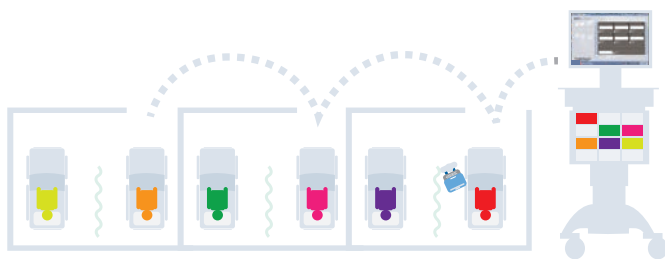


Medication Security & Visibility at the bedside

- Individually locking, patient-specific drawers can be accessed by scanning the patient ID barcode
- Real-time bedside medication administration, barcode patient identification and direct eMAR API access streamlines BCMA process, reduces redundancy and increases accuracy
- Patient drawers automatically assigned using the ADT (Admission/Discharge/Transfer) interface, eliminating time consuming and error-prone manual drawer labeling
- Utilizes the hospital's Active Directory for consistent user authentication
- Configurable drawer display fields allow customization of the user interface

More Control & Flexibility for Pharmacists across a variety of pharmacy distribution models

- Browser-based AccessManager™ console provides access to reports while allowing for Active Directory-compatible user management, fleet management and system configuration
- Configurable, time-based access controls reduce the risk of medication administration at an incorrect time and aid in pharmacy reconciliation for unused medications
- Optional medications orders interface – Rx MD can act as a patient medication order filler and verify that an order has been administered.
- Secure Pharmacy email alerts for transferred & discharged patients



Streamline Your Workflow

- Secures and tracks patient specific medications for up to 12 patients in individually-locking drawers, reducing trips and time spent at the ADC
- ADT and patient orders transmitted via wireless network to the cart to facilitate faster medication delivery
- Reduce trips to and time spent at the automated dispensing cabinet

Scalable & Centralized Software Architecture and Integration

- Multi-Org - scalable architecture - ability to scale from two bed clinic to multi facility health system
- Ability to set up health system access rights, such as by department
- Enterprise reporting available
- Enterprise multi-facility deployment
- HL7 compliant, ADT interface (patient demographics), and RDE interface (Pharmacy approved orders)
- Configurable interface engine easily communicates with the HIS
- Project management, installation and training by TouchPoint Medical's professional services team

Store and secure your medications to
the bedside.

AccessRx Secure™



Secure your medications throughout your workflow

- Individual locking drawers
- Easy-to-use software
- Storage configurations to secure a variety of medications and controlled substances
- Smoked polycarbonate 4" & 6" drawers
- Aluminum locking storage and controlled substance drawers
- Configurable drawer display fields allow customization of the user interface
- Add AccessRx MD™ software options to existing AccessRx Secure™ carts for a scalable, custom solution



Configure your system to meet your medication and supply requirements.



Dimensions

	102mm (4in) Drawer Specifications	152mm (6in) Drawer Specifications	Controlled Substance Full Width Drawer Specifications
Width	91.4mm (3.6in)	142.2mm (5.6in)	271.8mm (10.7in)
Height	238.8mm (9.4in)	238.8mm (9.4in)	228.6mm (9in)
Depth	55.9mm (2.2in)	55.9mm (2.2in)	50.8mm (2in)
Volume	1213cm ³ (74in ³)	1885cm ³ (115in ³)	3195cm ³ (195in ³)

102mm (4in) Drawer Specifications

91.4mm (3.6in)
238.8mm (9.4in)
55.9mm (2.2in)
1213cm³ (74in³)

152mm (6in) Drawer Specifications

142.2mm (5.6in)
238.8mm (9.4in)
55.9mm (2.2in)
1885cm³ (115in³)

Controlled Substance Full Width Drawer Specifications

271.8mm (10.7in)
228.6mm (9in)
50.8mm (2in)
3195cm³ (195in³)



Contact your TouchPoint Medical representative to learn more and discuss additional accessories specific to your point-of-care application. Visit touchpointmed.com/contact to get in touch with your local representative.



AccessPoint™

Securely and reliably mobilize your medical equipment throughout your facility.

The AccessPoint™ Equipment Carts offer stable and robust design so you can confidently mobilize and operate your essential medical equipment.



	APQ-CFH39-1	APQ-CFH39-2	APQ-CFH33-1	APQ-CFH33-2
Cart Surface Height	99cm (39in)	99cm (39in)	84cm (33in)	84cm (33in)
Cart Capacity	up to 65kg (143lbs)			
Drawer Load Capacity	3kg (6.6lbs)			
Cart Footprint	530mm(20.8in) width x 610mm(24in) depth			
Construction	Aluminum construction provides a high load bearing capacity of 65kg (143lbs) despite the low weight of the cart. High bending and torsion resistance.			
Casters	4 x 10cm (4in), lockable twin casters. Suitable for all flooring.			
Material	Anodized / powder-coated			

KEY BENEFITS



Easy
Maneuverability



Robust
Construction



Secure & Organized
Cable Management



Modular Platform for
many Applications



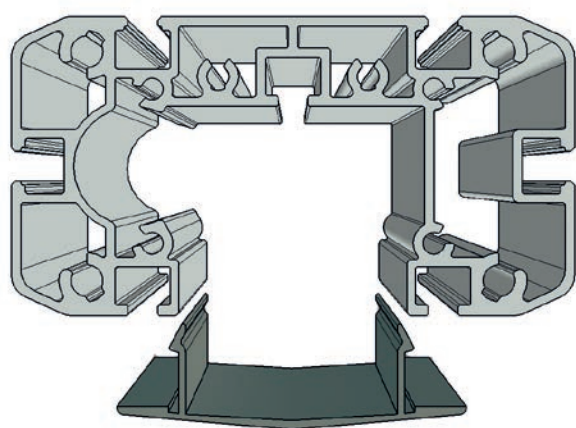
Highly Stable
Wheel Base



Easy to
Clean

Smart Cable Management.

Designed with safety and efficiency in mind, these carts include our Smart Cable Management Center Support Column to easily access organized and secure cable routing.



Close-up: support extrusions center column cable channel



Our center support column provides you with the following benefits:

- Keeps all cords clean and out of sight
- Ensures separate and secure cable routing
- Easy snap-open access to cables at any point in its routing
- Optional column mounted socket strip allows for easy cord control and access

AccessPoint™ Equipment Carts can be used for any number of applications within a clinical setting, such as in anesthesia, physiotherapy, ultrasound diagnostics and more.



Everything you need - Accessible and Available.

Our accessories help improve your workflow with effective ways to store, hold, and secure the items you rely on everyday.



Shelf
Load Capacity:
20kg (44lbs)
APQ-SHELF



Cable Winder
APQ-CBLWNR



Socket Strips
Country Specific



**Metal Wire
Storage Basket**
APQ-STRBSKT



Adjustable IV Pole
APQ-IVPOLE



Contact your TouchPoint Medical representative to learn more and discuss additional accessories specific to your point-of-care application. Visit touchpointmed.com/contact to get in touch with your local representative.



AccessMount™

Technology within reach.

Versatile configurations and reliable design securely manage your equipment so you can be free to focus on delivering exceptional patient care.



AccessMount™	Documentation Station, Height Adjustable	Monitor Arm	Documentation Station, Pivoting	Tablet Surface Mount
Maximum Load Capacity	14kgs (30.8lbs)	8kgs (17lbs)	14kgs (30.8lbs)	0.75kgs (1.58lbs)
VESA® 75/100 Mount	✓	✓	✓	
Keyboard & Mouse Tray Option	✓		✓	
Concealed Cable Management	✓	✓	✓	✓
Variable Height Adjustment	✓	✓		✓
Extension Arm Option		✓	✓	

Strong support. Flexible design. Reliable positioning.

KEY BENEFITS



Concealed Cable
Management



Easy
Cleaning



Easy Mounting
Wall Track Options



Variety of
Configurations



Reliable Positioning
Technology



Extension Arm
Options

Secure your technology easily and reliably with our range of mounting solutions.



DOCUMENTATION STATION, HEIGHT ADJUSTABLE

Part Number	Length	Pivot Arm	VESA® Mount	Load Rating	Vertical Adjustment Range	Keyboard/Mousepad
AM-HDMA	300mm (11.8in)	No	VESA® 75/100	8-14kgs (17.6-30.8lbs)	460mm (18.1in)	No
AM-HDMA-KM	300mm (11.8in)	No	VESA® 75/100	8-14kgs (17.6-30.8lbs)	460mm (18.1in)	Yes

Mounting: Mount to wall with any AccessMount™ support extrusion



MONITOR ARM

Part Number	Length	Pivot Arm	VESA® Mount	Load Rating	Vertical Adjustment Range	Keyboard/Mousepad
AM-MA	225mm (8.9in)	No	VESA® 75/100	0-8kgs (0-17.6lbs)	344mm (13.5in)	No
AM-MA-EA	225mm (8.9in)	Yes 250mm (9.8in)	VESA® 75/100	0-8kgs (0-17.6lbs)	344mm (13.5in)	No

Mounting: Mount to wall with any AccessMount™ support extrusion



DOCUMENTATION STATION, PIVOTING

Part Number	Length	Pivot Arm	VESA® Mount	Load Rating	Vertical Adjustment Range	Keyboard/Mousepad
AM-PA	250mm (9.8in)	No	VESA® 75/100	0-14kgs (0-30.8lbs)	N/A	No
AM-PA-EA	250mm (9.8in)	Yes 250mm (9.8in)	VESA® 75/100	0-14kgs (0-30.8lbs)	N/A	No
AM-PA-KM	250mm (9.8in)	No	VESA® 75/100	0-14kgs (0-30.8lbs)	N/A	Yes
AM-PA-EAKM	250mm (9.8in)	Yes 250mm (9.8in)	VESA® 75/100	0-14kgs (0-30.8lbs)	N/A	Yes

Mounting: Mount to wall with any AccessMount™ support extrusion



TABLET SURFACE MOUNT

Part Number	Length	Tablet Width	Tablet Thickness	Load Rating	Mounting Surface Thickness
AM-TABMNT-S	225mm (8.9in)	146-200mm (5.75in - 8.66in)	7-11mm (.276in - .433in)	0.75kgs (1.58lbs)	40mm (1.58in)

Mounting: Easy-to-use, quick adjustment with self-contained tool.



Mount equipment at the ideal height for virtually every application

Support Extrusion Features

- Accommodates all AccessMount™ arms.
- Wall arms easily slide in extrusion tracks and secure with minimal tooling.
- Extrusions install directly on the wall.
- Two T-slots with thread plates (grid 32mm) on the front of the profile can accommodate system components and accessories including shelves, drawers, keyboard holders or standard runners.
- Cable routing for any cables supplying power to units.
- High Profile accommodates electrical components, such as socket strips.
- Smooth surface molding is easily wiped clean.
- Small gaps help prevent germ formation.
- Material: aluminum, natural anodized.

SUPPORT EXTRUSION LOW PROFILE

Part Number	Length	Load Rating
AM-TRACK-LP24	640mm (2ft)	50kgs (110lbs)
AM-TRACK-LP36	960mm (3ft)	75kgs (165lbs)
AM-TRACK-LP48	1280mm (4ft)	75kgs (165lbs)

Included: 2 tapped strips, 2 caps (top and bottom), cover strips (depending on length) including mounting hardware

SUPPORT EXTRUSION HIGH PROFILE

Part Number	Length	Load Rating
AM-TRACK-HP24	640mm (2ft)	50kgs (110lbs)
AM-TRACK-HP36	960mm (3ft)	100kgs (220lbs)
AM-TRACK-HP48	1280mm (4ft)	125kgs (275lbs)

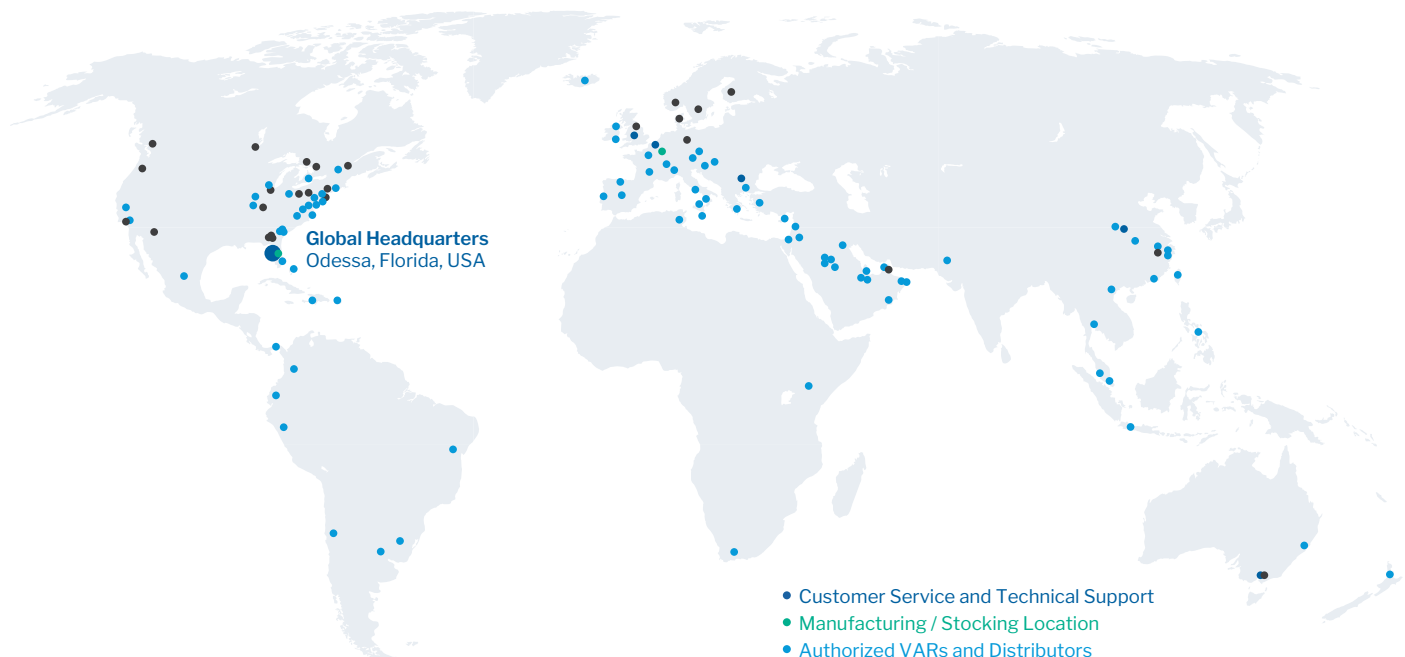
Included: 1 support extrusion with 2 tapped strips, mounting grid, 32 mm in both front T-slots, 2 caps (top and bottom), including mounting hardware



If you require different installation such as DIN rail mounting, please contact your local TouchPoint Medical Representative or email us at info@touchpointmed.com

A Global Business with a Local Touch

TouchPoint Medical brings a global network of manufacturing, quality, and engineering to the forefront of the medical industry. From quality and performance, to aesthetics and ergonomics, we know small touches make a big difference to our customers. We provide customer-driven medical technology and service solutions to thousands of hospitals and health care facilities around the world.



Global Headquarters & Americas
Customer and Technical
Support Office
Odessa, FL, USA
Tel: (1) 800 947 3901

European Headquarters
Customer and Technical
Support Office
Kruibeke, Belgium
Tel: (32) 3 432 53 00

**China, Taiwan, Japan,
Korea, Hong Kong**
Customer and Technical
Support Office
Shanghai, China
Tel: (86) 21 5046 3232

United Kingdom
Customer and Technical
Support Office
Rugby, United Kingdom
Tel: (44) (0) 844 576 1247

Middle East / Africa
Customer and Technical
Support Office
Dubai, United Arab Emirates
Tel: (971) 55 5963 092

SE Asia, AUS/NZ
Customer and Technical
Support Office
Victoria, Australia
Tel: (61) 3 9330 5050

Nordic Region
Customer and Technical
Support Office
Tranby, Norway
Tel: (47) 31 90 97 60
Jonsered, Sweden
Tel: (46) (0) 31 757 20 50

touchpointmed.com

BRINGING CARE FORWARD.™